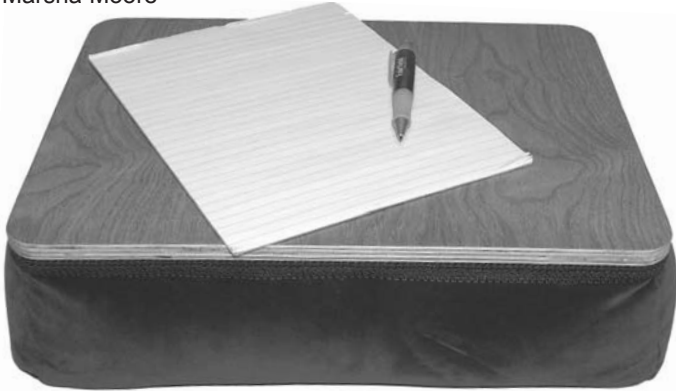


# Microbead Desk

Pattern by:  
Marsha Moore



## Fabric requirements

1/2 yard 60" wide "Oh! So Soft" 100% polyester velour from Avlyn Fabrics

## Material Requirements

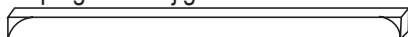
One bag poly-fil® Micro Beads  
One 12" x 16" piece 1/2" thick oak plywood  
5' length 1/2" x 3/4" pine trim  
wood glue  
tacky glue  
ten #4 3/4" long screws  
sewing thread  
polyurethane  
1 5/8 yards 1/2"-wide gimp or ribbon to match fabric

## Tools

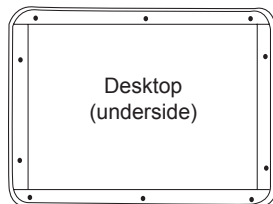
Sewing machine  
pins  
scissors  
ruler, pencil and fabric marking pencil  
paper for pattern  
coping saw or jig saw  
staple gun with staples  
screw driver  
drill  
paintbrush  
handsaw  
1 sheet #220 very fine sandpaper  
Optional: hammer

## Desk Top

- 1) Trace template to corners of plywood desktop. Round corners using a coping saw or jigsaw.
- 2) Cut two 15 3/4" pieces from pine trim. Trace the corners template to the ends of the 3/4" sides. Round ends using a coping saw or jigsaw.



- 3) Drill three holes in the pine strips. Place on wrong side of desktop 1/8" from the edge. Drill through holes into plywood about 1/4".



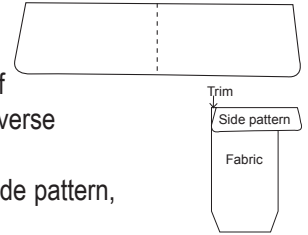
Apply glue to wrong side of pine strip and attach to the plywood with screws.

- 4) Measure the space between the wood strips (it should be about 10 1/4") and cut pieces that length. Drill two holes in each piece. Place on wrong side of desktop 1/8" from the edge. Drill through holes into plywood about 1/4". Apply glue to wrong side of pine strip and attach to the plywood with screws.

- 5) Finish the desktop and sides with polyurethane, sanding lightly between coats. Allow desktop to dry completely.

## Beanbag

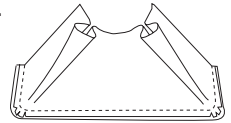
- 1) Draw a line in the center of your paper. Trace the side pattern to one half of your paper, matching centerlines. Reverse pattern and trace to other side of paper.



- 2) Cut one rectangle 24" x 13". Using side pattern, trim corners of rectangles.

- 3) Stay-stitch by making a row of stitching (12-14 per inch) 1/4" from top of sides and along short edges of rectangle.

- 4) Pin long edge of rectangle to sides clipping seam allowance of rectangle at corners for smooth turning. Stitch 1/2" from edges.

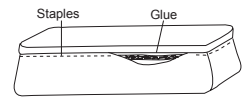


- 5) Stitch other side of rectangle to remaining side in same manner.

## Attaching Fabric to Wood

*Note: If your staples do not lay flat, tap them gently into place with a hammer.*

- 1) Position beanbag around strip of wood- it should fit snugly. Make adjustments in seams if it is loose. Staple corner seams to center of curve. Apply glue to one long side of strip and press fabric in place. Staple fabric to wood at 1" intervals. Repeat on two more sides.



- 2) Insert micro beads into fabric through open side following instructions on microbead bag.

- 3) Glue and staple remaining side in place.

- 4) Glue gimp trim or ribbon around top edge of fabric to cover staples.

## Corner Template

